



## Guidance

# Residential Facilities: Reporting Primary Educational Setting

Michigan Department of Education Office of Special Education  
January 2022

## Reporting Valid and Reliable Data

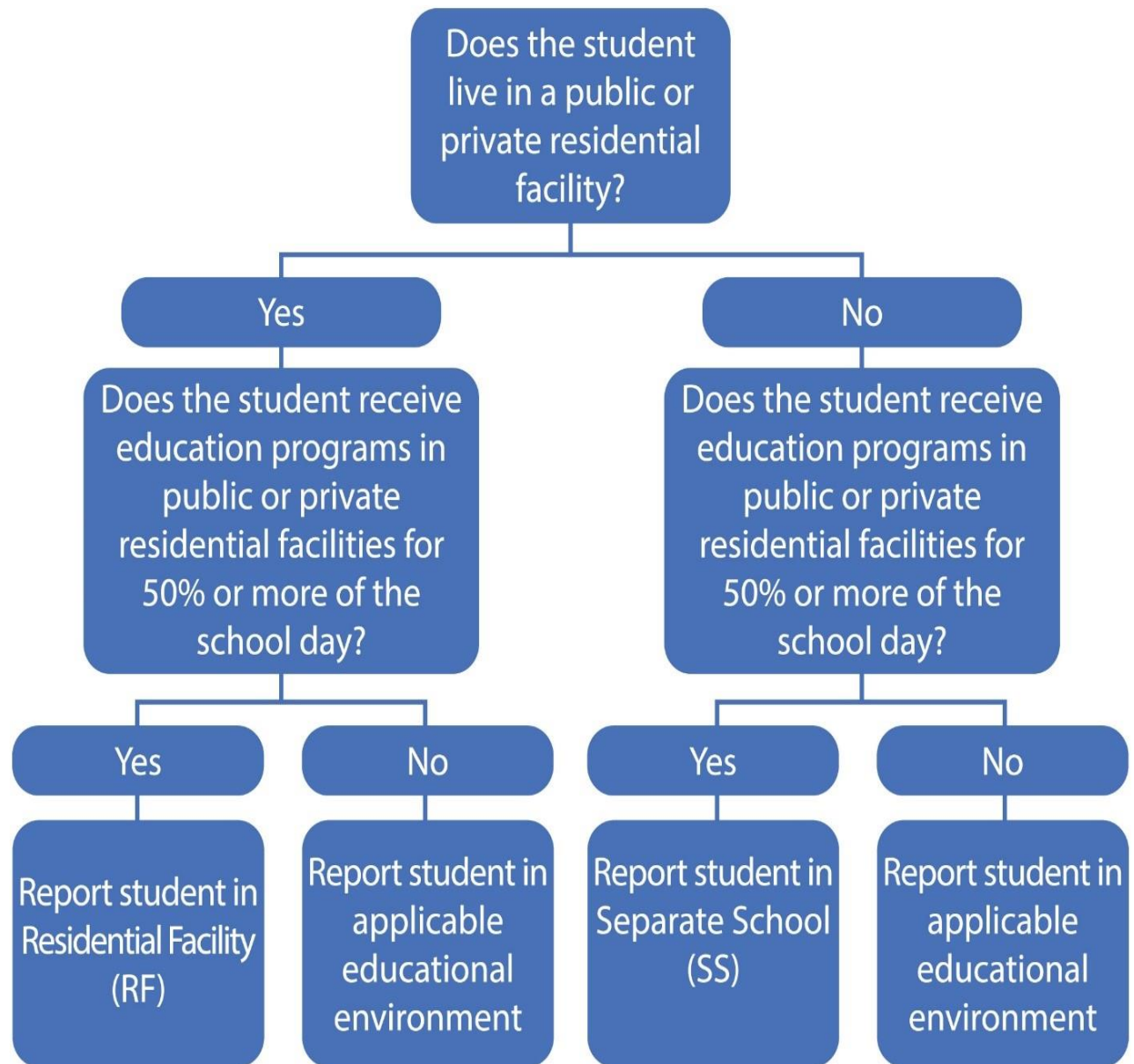
The Office of Special Education, in collaboration with the federal Office of Special Education Programs, has developed a decision tree to ensure the accurate reporting of primary educational setting of students with individualized education programs (IEP) in residential facilities. The decision tree will assist special education staff, administration, and reporting personnel who work with and report data for students with IEPs in residential facilities, in determining the correct primary educational setting code to report in the Primary Educational Setting Component for each General Collection and the End of Year Collection, in the Michigan Student Data System (MSDS).

## Determining Primary Educational Setting

**Does the student live in a public or private residential facility?**

- If yes:
  - Does the student receive education programs in a public or private residential facility, including schools located on the grounds of a residential facility, for 50% or more of the school day?
    - If yes, report student in residential facility.
    - If no, report student in the applicable [educational setting](#).
- If no:
  - Does the student receive education programs in a public or private residential facility, including schools located on the grounds of a residential facility, for 50% or more of the school day?
    - If yes, report student in separate school.
    - If no, report student in applicable [educational setting](#).

## Determining Primary Educational Setting Decision Tree



**Note:** "Receiving education programs in public or private residential facilities," includes schools located on the grounds of residential facilities.

Additional Primary Education Setting codes can be found in the [Michigan Student Data Systems Collection Details Manual](#).